

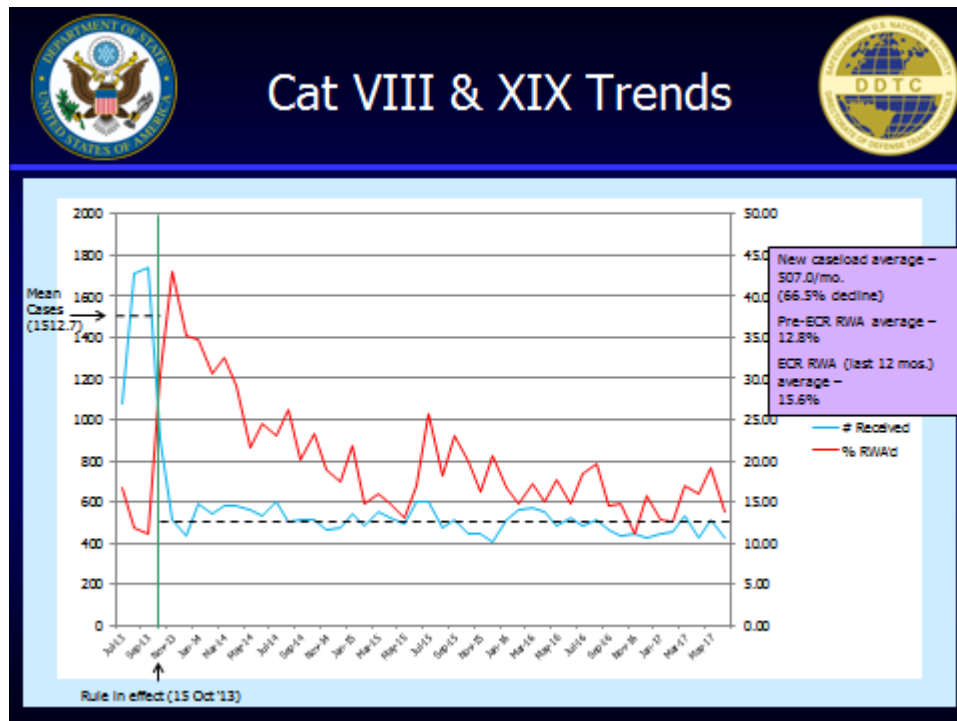
License Applications and U.S. Exports

The First USML to CCL Regulatory Change

Aircraft and Gas Turbine Engines

October 15, 2013 to June 30, 2017

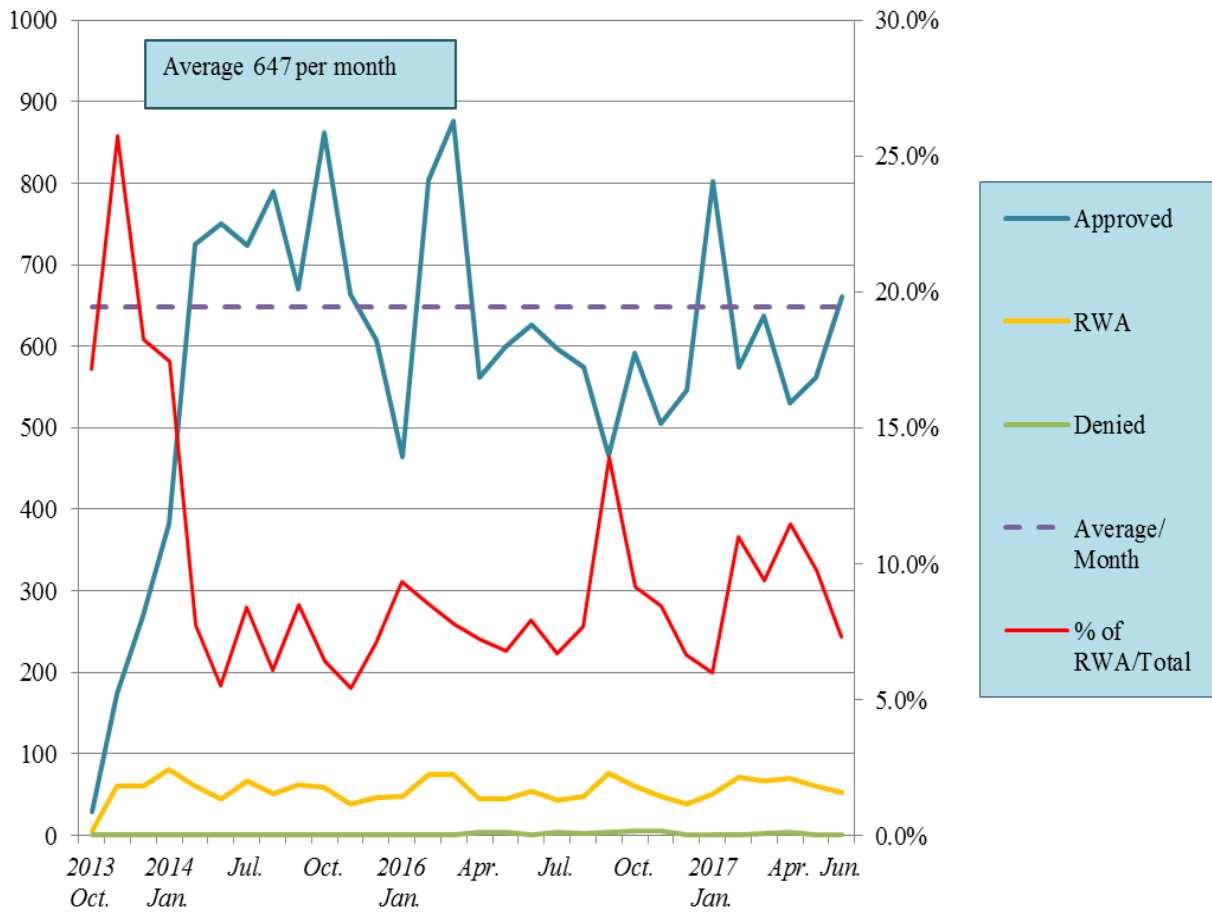
The license applications for items in categories VIII (Aircraft) and XIX (Gas Turbine Engines) of the United States Munitions List (USML) have declined 66.5% from an average of 1,513 to 507 per month through June 30, 2017. The average monthly drop of 1,006 in license applications is the result of certain items transitioning to the Commerce Control List (CCL).



Source: The Directorate of Defense Trade Controls of the U.S. Department of State, August 2017

Since the first USML to CCL regulatory change became effective on October 15, 2013, the average number of BIS processed licenses for the ten 600-Series items created by this rule is 647 per month through June 30, 2017. The approval rate is 90.6%.

BIS License Processing for the First USML to CCL Regulatory Change
October 15, 2013 to June 30, 2017

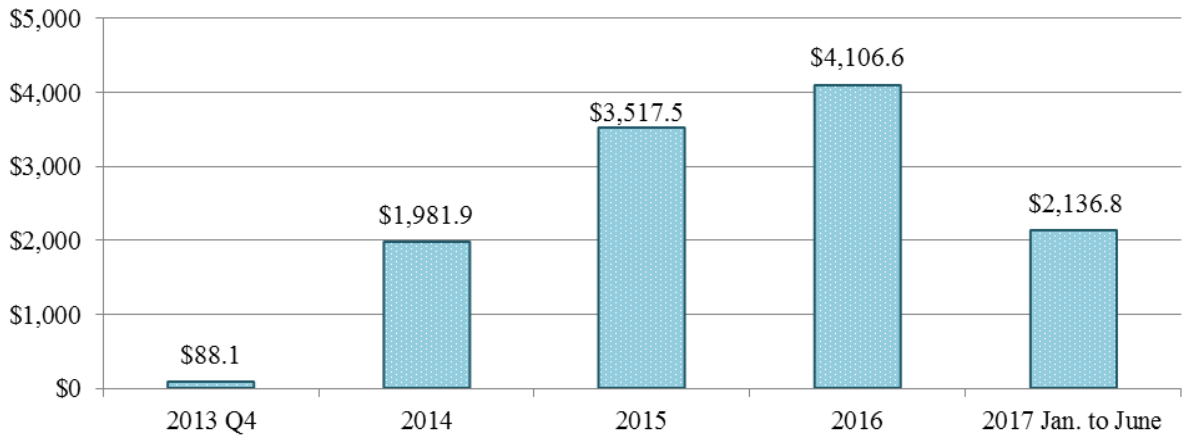


Source: Commerce U.S. Exports Exporter Support System, August 2017.

From October 15, 2013 to June 30, 2017, U.S. exports of items under the first USML to CCL regulatory change – Aircraft and Gas Turbine Engines items (9x610 and 9y619) under BIS jurisdiction totaled 228,092 shipments for \$11.9 billion.

U.S. Yearly Exports under the First USML to CCL Regulatory Change under BIS Jurisdiction

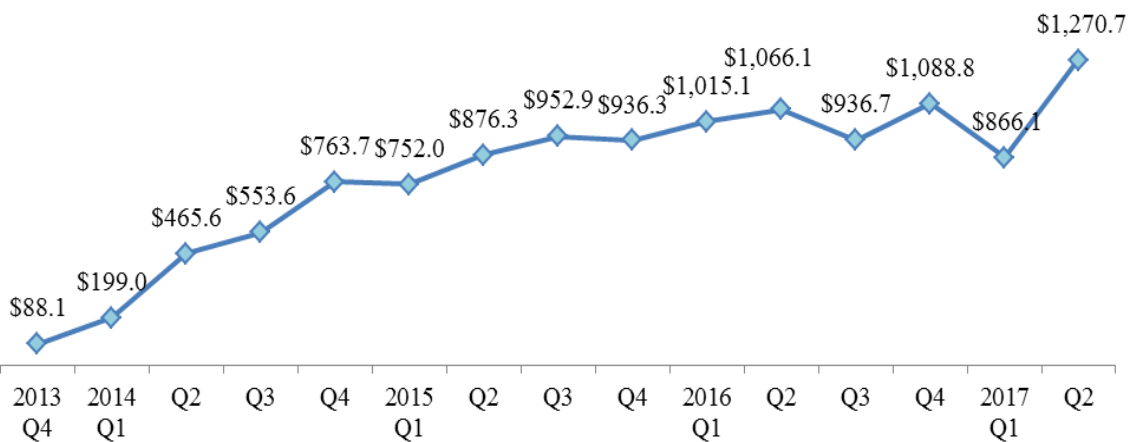
October 15, 2013 to June 30, 2017
\$million



Source: Automated Export System, August 2017

U.S. Quarterly Exports under the First USML to CCL Regulatory Change under BIS Jurisdiction

October 15, 2013 to June 30, 2017
\$million



Source: Automated Export System, August 2017

The First USML to CCL Regulatory Change-Aircraft and Gas Turbines
Top 15 Destinations of U.S. Exports under BIS Jurisdiction
 October 15, 2013 to June 30, 2017

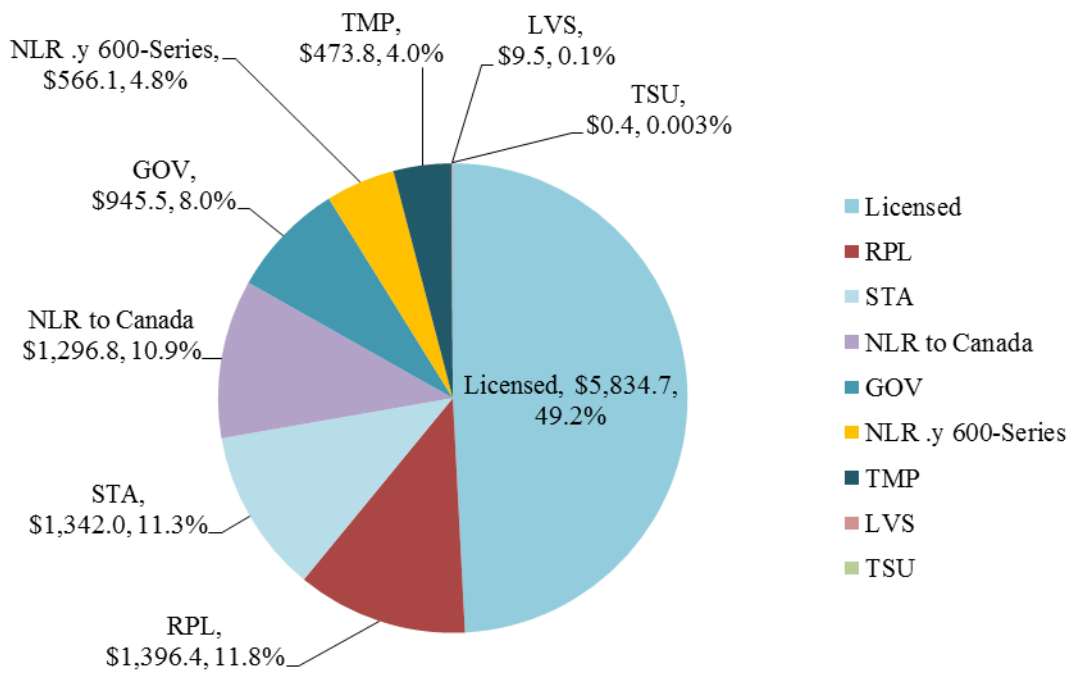
Country	Shipment Count	% of Total Shipment Count	Value \$million	% of Total Value
Japan	20,463	9.0%	\$2,020.1	17.0%
Canada	17,427	7.6%	\$1,442.2	12.2%
United Kingdom	24,067	10.6%	\$1,356.3	11.4%
South Korea	16,327	7.2%	\$936.1	7.9%
Italy	7,408	3.2%	\$431.9	3.6%
Israel	8,350	3.7%	\$424.8	3.6%
Germany	8,877	3.9%	\$414.7	3.5%
Singapore	11,786	5.2%	\$406.1	3.4%
United Arab Emirates	10,711	4.7%	\$366.5	3.1%
Spain	6,702	2.9%	\$339.8	2.9%
Taiwan	6,658	2.9%	\$318.8	2.7%
Saudi Arabia	4,063	1.8%	\$251.3	2.1%
Australia	7,584	3.3%	\$195.1	1.6%
Mexico	9,252	4.1%	\$183.0	1.5%
Poland	5,155	2.3%	\$182.9	1.5%
Top 15 Total	164,830		\$9,269.6	
Top 15 Total/ Grand Total		72.3%		78.1%
Grand Total	228,092		\$11,865.2	

Source: Automated Export System, August 2017

Of the \$11.9 billion in U.S. exports of 600-series items in the first USML to CCL regulatory change under BIS jurisdiction from October 15, 2013 to June 30, 2017, licensed exports totaled \$5.8 billion (49.2% of the total); Servicing and replacement of parts and equipment totaled \$1.4 billion (11.8%) and Strategic Trade Authorization (STA) totaled \$1.3 billion (11.3%).

**U.S. Exports under the First USML to CCL Regulatory Change
by BIS License Type**

October 15, 2013 to June 30, 2017
\$million



Source: Automated Export System, August 2017

BIS License Exceptions:

STA: Strategic Trade Authorization

NLR: No License Required

RPL: Servicing and replacement of parts and equipment

GOV: Governments, international organizations, international inspections under the Chemical Weapons Convention, and the International Space Station

TMP: Temporary imports, exports, reexports, and transfers (in-country)

LVS: Shipments of limited value

TSU: Technology and software-unrestricted