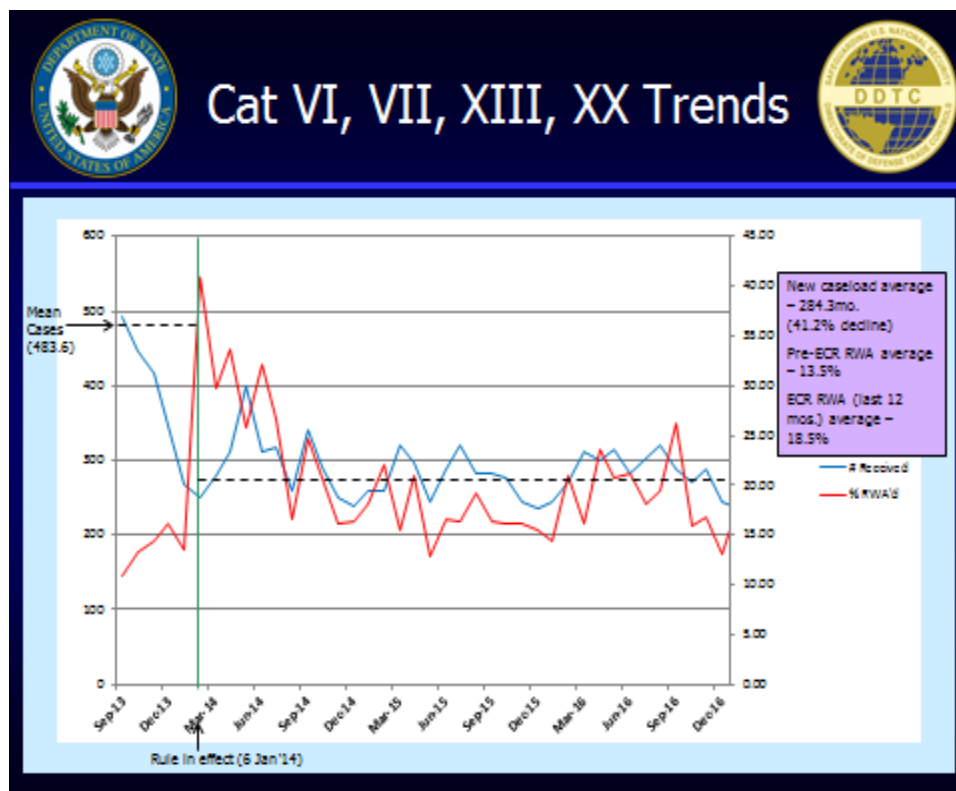


### License Applications and U.S. Exports

#### Vehicles and Vessels

January 6, 2014 to March 31, 2017

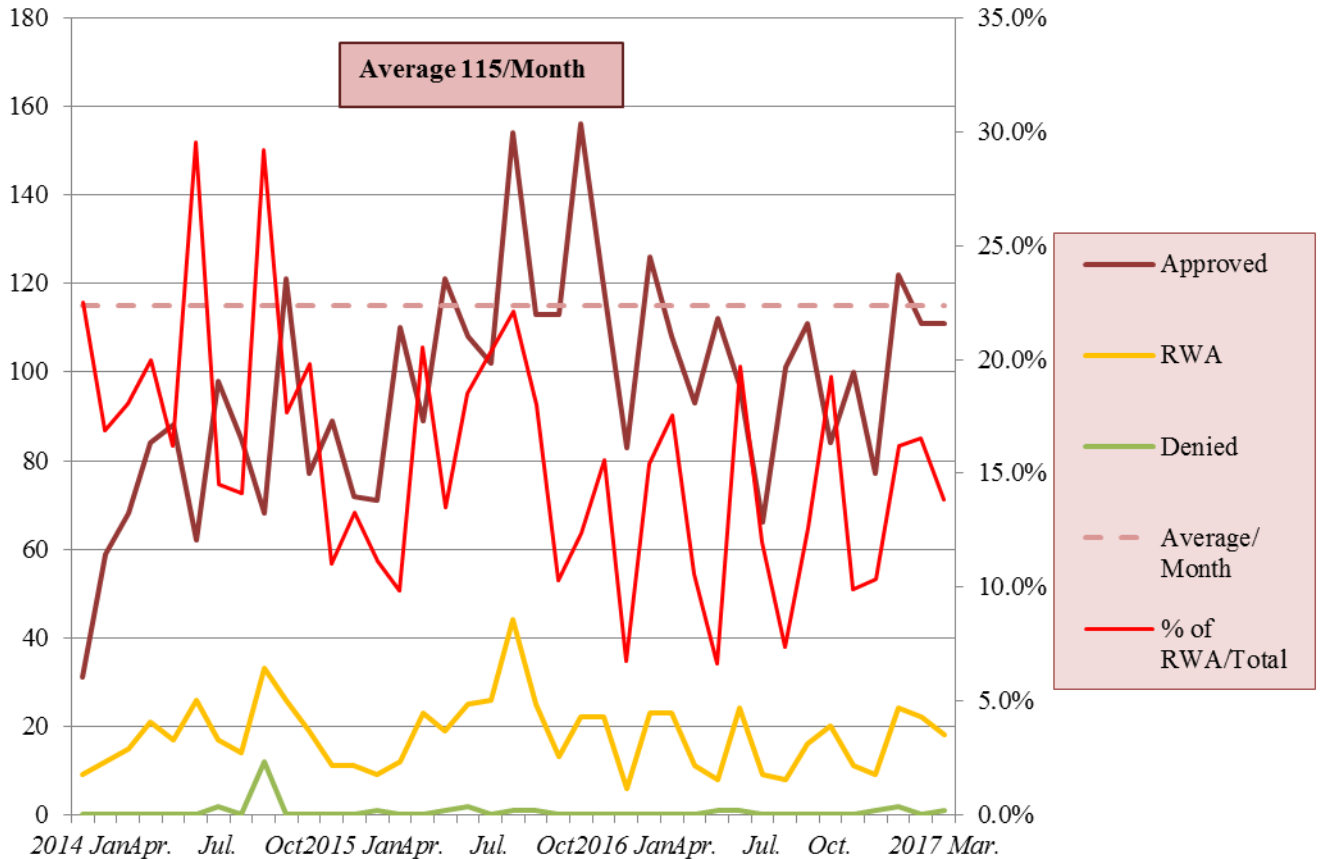
The license applications for items in categories VI (Vessels), VII (Vehicles), XIII (Auxiliary Military Equipment) and XX (Submersible Vessels) of the United States Munitions List (USML) have declined 41.2% from an average of 484 to 284 per month through March 31, 2017. The average monthly drop of 200 license applications is the result of certain items transitioning to the Commerce Control List (CCL) under Export Control Reform (ECR).



Source: The Directorate of Defense Trade Controls of the U.S. Department of State, April 2017

Since the Second ECR Transition Rule became effective on January 6, 2014, the average number of BIS license applications for the nineteen 600-Series items created by this rule is 115 per month through March 31, 2017. The approval rate is 83.8%.

### BIS License Processing for the Second ECR Transition Rule January 6, 2014 to March 31, 2017

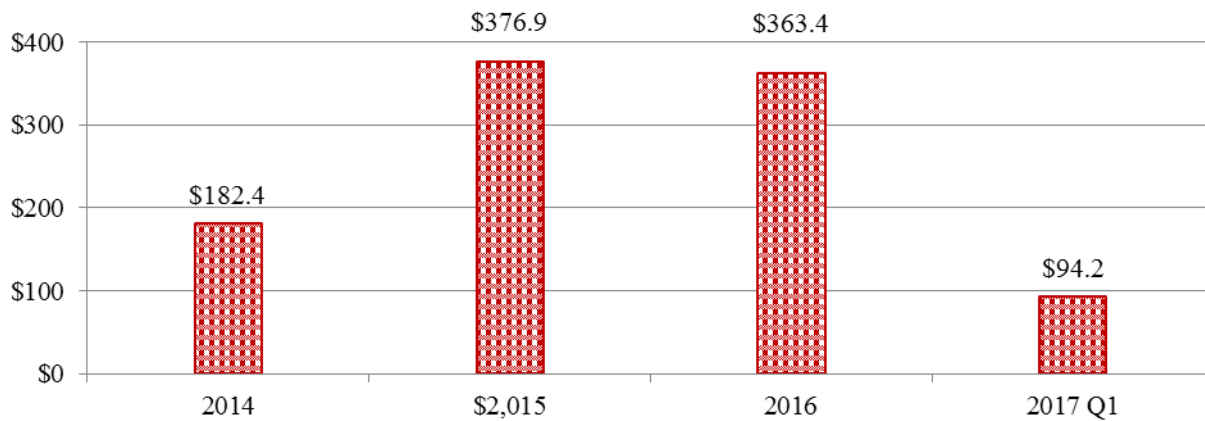


Source: Commerce U.S. Exports Exporter Support System, July 2017

From January 6, 2014 to March 31, 2017, U.S. exports of items in the Second ECR transition Rule – Vehicles and Vessels items (0y606, 8y609, 8y620 and 0y617) under BIS jurisdiction totaled 26,138 shipments for \$1.0 billion.

**U.S. Exports under the Second ECR Transition Rule Items  
under BIS Jurisdiction**

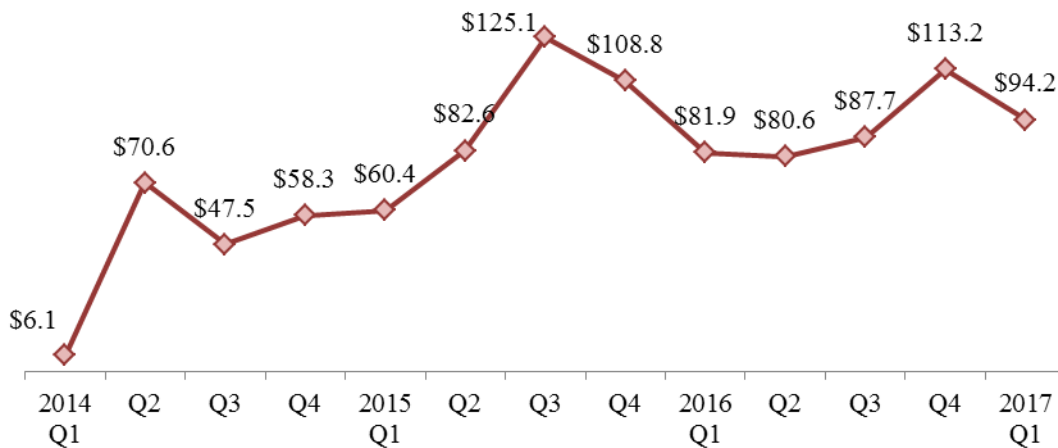
January 6, 2014 to March 31, 2017  
\$million



Source: Automated Export System, July 2017

**U.S. Quarterly Exports of the Second ECR Transition Rule Items  
under BIS Jurisdiction**

January 6, 2014 to March 31, 2017  
\$million

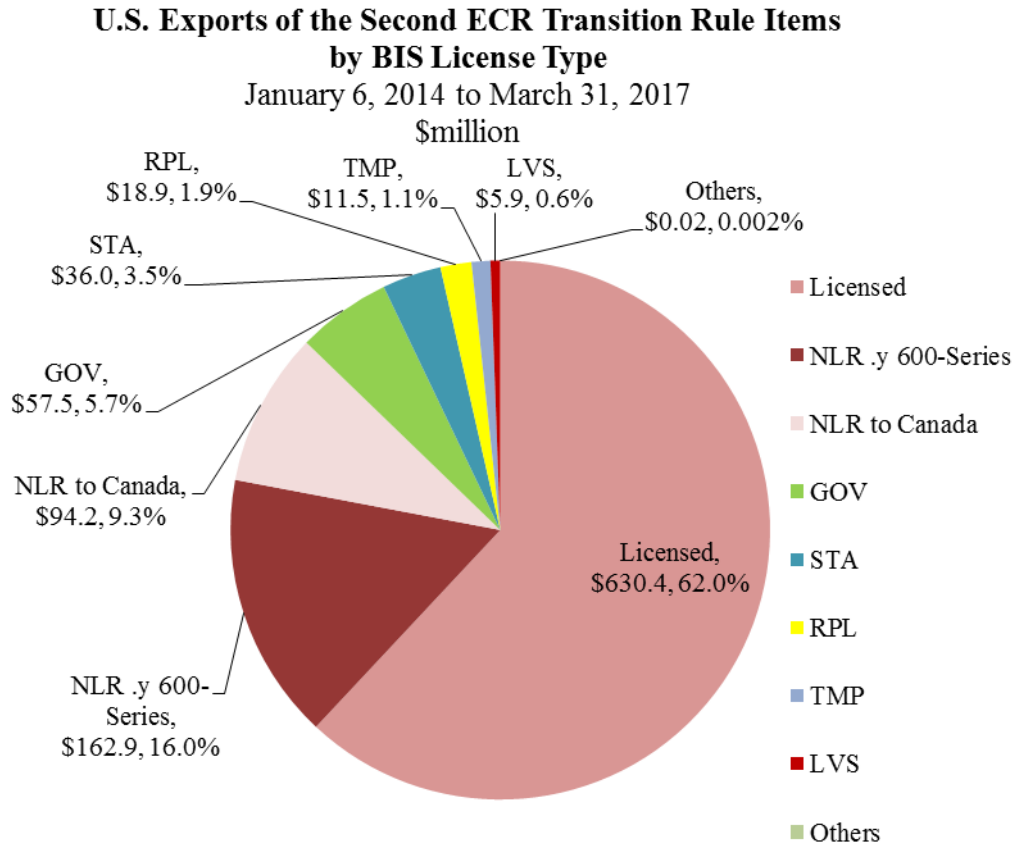


Source: Automated Export System, July 2017

**The Second Transition Rule-Vehicles and Vessels**  
**Top 15 Destinations of U.S. Exports under BIS Jurisdiction**  
 October 15, 2013 to March 31, 2017

Country	Shipment Count	% of Total Shipment Count	Value \$million	% of Total Value
South Korea	3,856	14.8%	\$146.9	18.2%
Canada	4,555	17.4%	\$120.7	12.6%
Israel	2,436	9.3%	\$118.8	9.3%
Iraq	97	0.4%	\$88.9	8.2%
Turkey	502	1.9%	\$59.5	3.7%
United Arab Emirates	341	1.3%	\$42.5	3.7%
United Kingdom	4,417	16.9%	\$39.9	3.4%
Australia	677	2.6%	\$39.6	3.4%
Japan	3,008	11.5%	\$36.4	3.2%
Saudi Arabia	404	1.5%	\$33.0	2.9%
Kuwait	299	1.1%	\$30.3	2.7%
Germany	866	3.31%	\$26.0	2.4%
Tunisia	9	0.0%	\$25.2	1.8%
Belgium	134	0.5%	\$22.0	1.6%
Singapore	30	0.1%	\$17.0	1.5%
<b>Top 15 Total</b>	<b>21,631</b>		<b>\$846.8</b>	
<b>Top 15 Total/ Grand Total</b>		<b>82.8%</b>		<b>83.2%</b>
<b>Grand Total</b>	<b>26,138</b>		<b>\$1,017.3</b>	
Source: Automated Export System, July 2017				

Of the \$1.0 billion in U.S. exports of 600-series items in the Second ECR transition rule under BIS jurisdiction, licensed exports totaled \$630.4 million (62.0% of the total); No License Required (NLR) for .y 600-series items totaled \$162.9 million (16.0%); and NLR for 600-series items to Canada totaled \$94.2 million (9.3%).



BIS License Exceptions:

NLR: No License Required

GOV: Governments, international organizations, international inspections under the Chemical Weapons Convention and the International Space Station

STA: Strategic Trade Authorization

RPL: Servicing and replacement of parts and equipment

TMP: Temporary imports, exports, reexports, and transfers (in-country)

LVS: Shipments of limited value